

Re-cutting Pilot Sport Cup



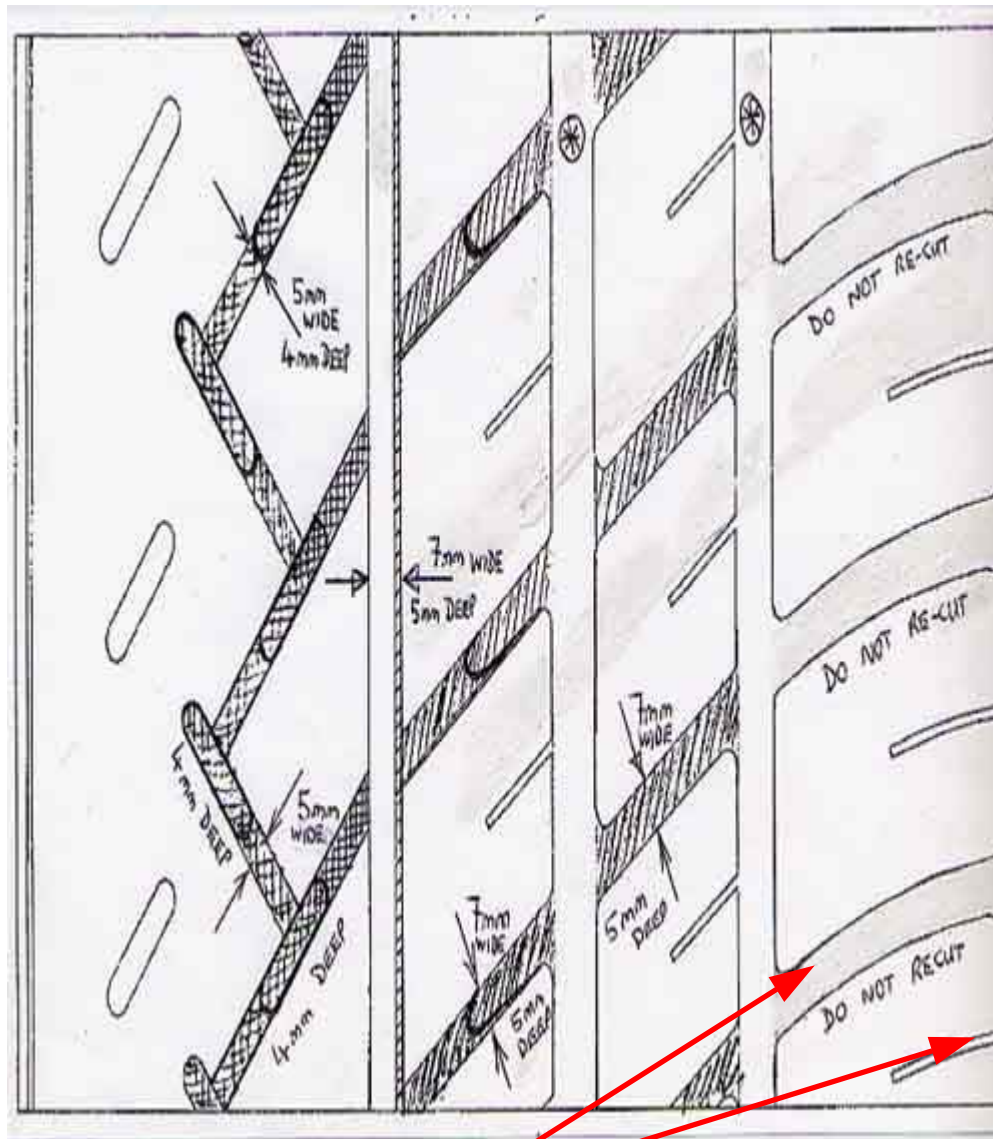
Before



After

Re-cutting Pilot Sport Cup





**(*) WARNING, DO NOT RE-CUT
THESE LONGITUDINAL GROOVES**

Re-cutting Pilot Sport Cup

The objective of the modified design is to improve performance in deep standing water.

The changes:

- The outer slotted tread area is modified to zigzag pattern, new slot width 5mm, depth 4mm* with the 3rd row of diagonal slots extended to meet first circumferential groove as per diagram. The outer row of slots is not to be modified.
- The diagonal grooves in the 2 central ribs are to be re-cut to 7mm wide, 5mm* depth, the shorter grooves should be extended to reach the main circumferential grooves
- Widen the first circumferential groove (the one closest to the exterior) to 7mm wide, and make the walls of the grooves more perpendicular, width 7mm, depth 5mm*

This means that all the re-cutting can be done with 2 blades:

- 7mm wide by 5mm deep* (we use a Rescut lightweight blade No. 13)
Area for this blade; Central diagonal groove re-cutting & 1st circumferential groove
- 5mm wide by 4mm deep* (we use a Rescut lightweight blade No. 3)
Area for this blade: Extended zigzag pattern in outer tread pattern area

Important notes:

- In no circumstances exceed these re-cutting depths mentioned above (*)
- Do not re-cut the inner diagonal grooves
- Do not re-cut the row of slots in the outer tread area
- This is a job for a tyre specialist experienced in this type of work